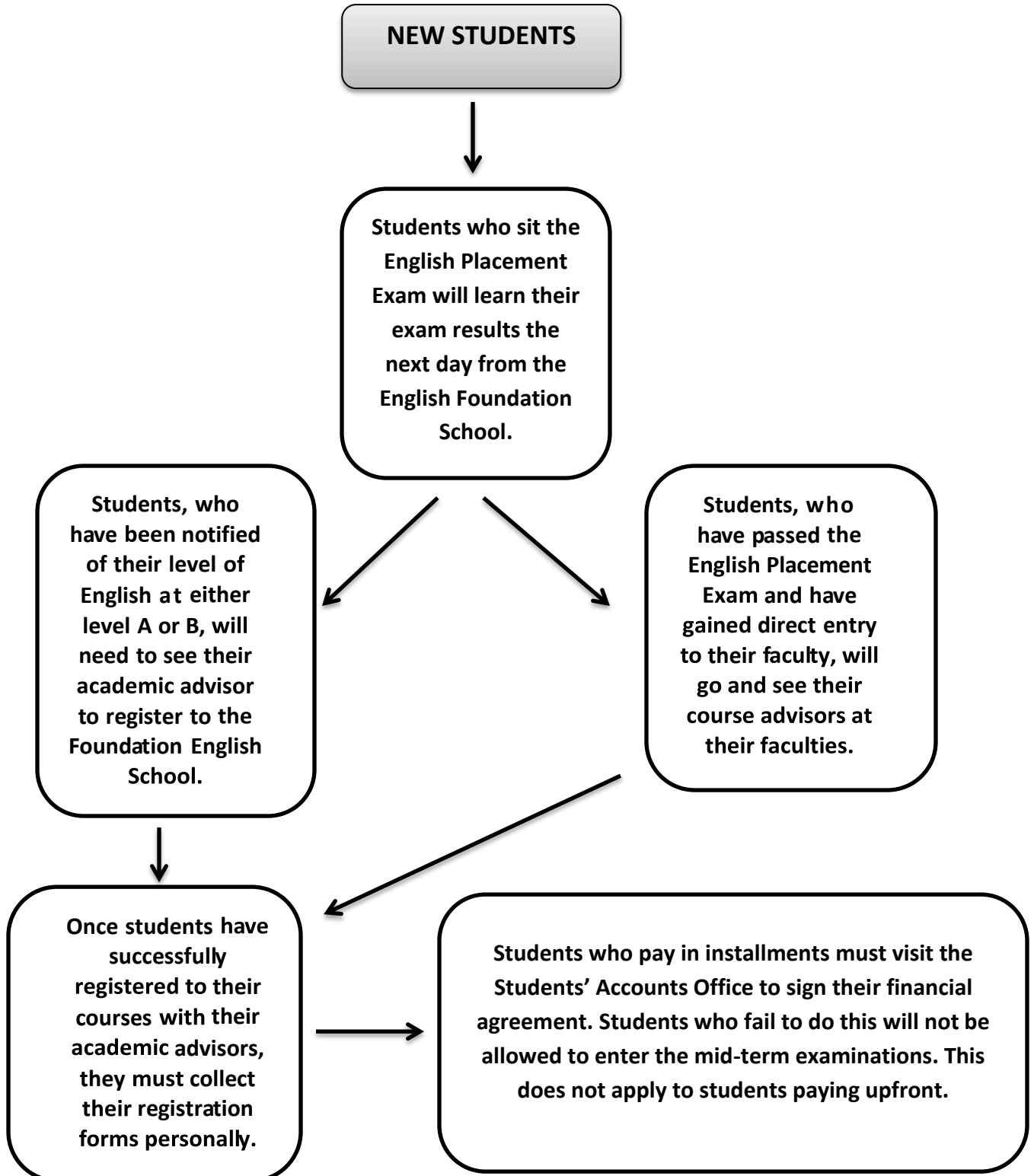




**GIRNE AMERICAN UNIVERSITY
FOUNDATION ENGLISH SCHOOL
2016 – 2017 / ROUTE TO FES GRADUATION**



CURRENT STUDENTS

```
graph TD; A[CURRENT STUDENTS] --> B[Students can view their current account status by visiting the student portal (student.gau.edu.tr) with their student numbers. Payments should be made to Ziraat Bank. On the following day, the students should go to the students' office.]; B --> C[Students must select their courses between the indicated dates. (student.gau.edu.tr)]; C --> D[Once students have successfully registered to their courses with their academic advisors, they must collect their registration forms personally.]; D --> E[Students who pay in installments must visit the Students' Accounts Office to sign their financial agreement. Students who fail to do this will not be allowed to enter the mid-term examinations. This does not apply to students paying upfront.];
```

Students can view their current account status by visiting the student portal (student.gau.edu.tr) with their student numbers. Payments should be made to Ziraat Bank. On the following day, the students should go to the students' office.

Students must select their courses between the indicated dates. (student.gau.edu.tr)

Once students have successfully registered to their courses with their academic advisors, they must collect their registration forms personally.

Students who pay in installments must visit the Students' Accounts Office to sign their financial agreement. Students who fail to do this will not be allowed to enter the mid-term examinations. This does not apply to students paying upfront.

**FOUNDATION ENGLISH SCHOOL
STUDENTS**

After the collection of the registration forms and the agreement of the payment procedures, students will collect their books from the bookshop and the copy center.

Students will be asked to attend an induction speech, which will be given by the Foundation English School directory, to learn more about the timetables, syllabus, exams, and school rules and to meet their teachers.

Students will start their courses in different levels on the set date, and will be asked to have a continuous attendance and sufficient portfolio work.

LEVEL A1 STUDENTS
Students will study A1 level for six weeks. After the mid-term exam, A1 students will become A2 and will be obliged to score minimum of 60 points in total to study in level B1.

LEVEL A2 STUDENTS
Students will study level A2 for one semester and will have the chance to study in level B1 if they score minimum of 60 points in total.

LEVEL B1 STUDENTS
Students will study B1 for one semester and will have the chance to sit the English Proficiency Exam if they score minimum of 60 points in total. At the end of the course, students who achieve the required mark will have the chance to go to the faculty.